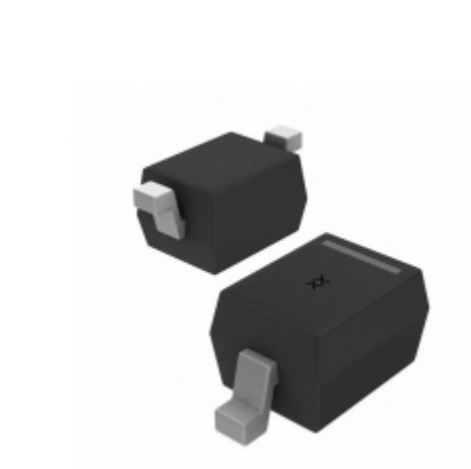


| CDSOD323-T08SC | |
|----------------------|---|
| Número de pieza | CDSOD323-T08SC |
| Fabricante | Bourns, Inc. |
| Descripción | TVS DIODE 8VWM 18.5VC SMD |
| cantidad disponible | 42000 pcs in stock |
| Hojas de datos | |
| CDSOD323-T08SC Price | Solicitar precio y tiempo de entrega en línea or Email us: Info@ariat-tech.com |



[CONSIGUE UNA COTIZACIÓN](#)

| Información técnica de CDSOD323-T08SC | | | |
|---------------------------------------|------------------|---|---------------------------|
| Número de pieza del fabricante | CDSOD323-T08SC | Categoría | Protección del circuito |
| Fabricante | Bourns, Inc. | Descripción | TVS DIODE 8VWM 18.5VC SMD |
| Paquete / caja | Tape & Reel (TR) | cantidad disponible | 42000 |
| Serie | - | Temperatura de funcionamiento | -55°C ~ 150°C (TJ) |
| Tipo de montaje | Surface Mount | Tipo | Zener |
| Capacitancia Frecuencia | 150pF @ 1MHz | aplicaciones | General Purpose |
| Paquete / Cubierta | SC-76, SOD-323 | Paquete del dispositivo | SOD-323 |
| Tensión - separación inverso (típico) | 8V | Voltaje - Desglose (Min) | 8.5V |
| Tensión - Apriete (Máx.) @ Ipp | 18.5V (Typ) | Corriente - Pico de pulso (10 / 1000µs) | 17A (8/20µs) |
| Potencia - Pico de pulso | 400W | Protección de la línea eléctrica | No |
| Canales bidireccionales | 1 | embalaje | Tape & Reel (TR) |

PC CDSOD323-T08SC 42000 Nuevas y originales en stock, Encuentre inventario CDSOD323-T08SC, Hoja de datos, PDF, Inventario en Ariat-Tech .com Online, Ordene CDSOD323-T08SC Bourns, Inc. con garantía y confianza. RFQ CDSOD323-T08SC: Info@Ariat-Tech.com

Partes relacionadas para CDSOD323-T08SC

| Imagen | Número de pieza | Descripción | Fabricante | Cantidad |
|--------|------------------------------------|----------------------------------|--------------|------------|
| | CDSOD323-T12LC | TVS DIODE 12VWM 28.6VC SOD323 | Bourns, Inc. | 30000 pcs |
| | CDSOD323-T05L | TVS DIODE 5VWM 18.3VC SMD | Bourns, Inc. | 13500 pcs |
| | CDSOD323-T12L | TVS DIODE 12VWM 28.6VC SMD | Bourns, Inc. | 762 pcs |
| | CDSOD323-T12 | TVS DIODE 12VWM 28.3VC SMD | Bourns, Inc. | 3000 pcs |
| | CDSOD323-T15 | TVS DIODE 15VWM 31.8VC SMD | Bourns, Inc. | 3000 pcs |
| | CDSOD323-T05S | TVS DIODE 5VWM 13.5VC SMD | Bourns, Inc. | 30000 pcs |
| | CDSOD323-T05SC | TVS DIODE 5VWM 14.5VC SMD | Bourns, Inc. | 38320 pcs |
| | CDSOD323-T08L | TVS DIODE 8VWM 18.3VC SMD | Bourns, Inc. | 16550 pcs |
| | CDSOD323-T08C | TVS DIODE 8VWM 18.5VC SOD323 | Bourns, Inc. | 30000 pcs |
| | CDSOD323-T05LC | TVS DIODE 5VWM 18.3VC SOD323 | Bourns, Inc. | 30000 pcs |
| | CDSOD323-T08 | TVS DIODE 8VWM 18.5VC SMD | Bourns, Inc. | 3000 pcs |
| | CDSOD323-T12C-DSL | TVS DIODE 12VWM 28.3VC SMD | Bourns, Inc. | 1550 pcs |
| | CDSOD323-T08LC | TVS DIODE 8VWM 18.3VC SOD323 | Bourns, Inc. | 30000 pcs |
| | CDSOD323-T12C | TVS DIODE 12VWM 28.3VC SOD323 | Bourns, Inc. | 30000 pcs |
| | CDSOD323-T15C | TVS DIODE 15VWM 31.8VC SOD323 | Bourns, Inc. | 30000 pcs |
| | CDSOD323-T05M | CDSOD323-T05M BOURNS | Bourns, Inc. | 474000 pcs |
| | CDSOD323-T12S | TVS DIODE 12VWM 25.9VC SMD | Bourns, Inc. | 30000 pcs |
| | CDSOD323-T08S | TVS DIODE 8VWM 16.9VC SMD | Bourns, Inc. | 17707 pcs |
| | CDSOD323-T12C-DSLQ | DIO TVS VWM 12V 350W BIDIR SOD32 | Bourns, Inc. | 500 pcs |
| | CDSOD323-T12SC | TVS DIODE 12VWM 29.5VC SOD323 | Bourns, Inc. | 36197 pcs |

Módulo IC Chips & IGBT - Número de pieza de stock activo

| | | | | |
|-----------------------------------|-----------------------------------|-----------------------------------|------------------------------------|------------------------------------|
| CDSCB10M7GF108-R0 | CDSCB10M7GF122-R0 | CDSCB10M7GF123-R0 | CDSCB10M7GF123S-R0 | CDSCB10M9GA114T-R0 |
| CDSF355-B01 | CDSF355B | CDSF4148 | CDSOD323-T03 | CDSOD323-T03C |
| CDSOD323-T03LC | CDSOD323-T03S | CDSOD323-T03SC | CDSOD323-T05 | CDSOD323-T05C |
| CDSOD323-T05L | CDSOD323-T05LC | CDSOD323-T05M | CDSOD323-T05S | CDSOD323-T05SC |
| CDSOD323-T08 | CDSOD323-T08C | CDSOD323-T08L | CDSOD323-T08LC | CDSOD323-T08S |
| CDSOD323-T12 | CDSOD323-T12C | CDSOD323-T12C-DSL | CDSOD323-T12L | CDSOD323-T12LC |
| CDSOD323-T12S | CDSOD323-T12SC | CDSOD323-T15 | CDSOD323-T15C | CDSOD323-T15LC |
| CDSOD323-T15S | CDSOD323-T15SC | CDSOD323-T18C | CDSOD323-T18LC | CDSOD323-T18S |
| CDSOD323-T18SC | CDSOD323-T24 | CDSOD323-T24C | CDSOD323-T24C-DSL | CDSOD323-T24L |
| CDSOD323-T24LC | CDSOD323-T24S | CDSOD323-T24SC | CDSOD323-T36C | CDSOD323-T36LC |