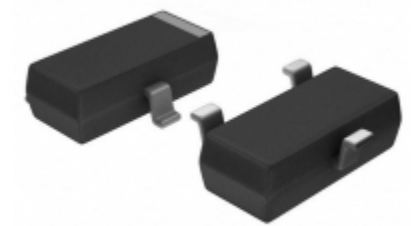


| | |
|------------------------|--|
| SI2318DS-T1-GE3 | |
| Número de pieza | SI2318DS-T1-GE3 |
| Fabricante | Vishay / Siliconix |
| Descripción | MOSFET N-CH 40V 3A SOT-23 |
| cantidad disponible | 51525 pcs in stock |
| Hojas de datos | |
| SI2318DS-T1-GE3 Price | Solicitar precio y tiempo de entrega en línea or Email us: Info@ariat-tech.com |


[CONSIGUE UNA COTIZACIÓN](#)

| Información técnica de SI2318DS-T1-GE3 | | | |
|--|------------------------------------|---|---|
| Número de pieza del fabricante | SI2318DS-T1-GE3 | Categoría | Productos Semiconductores Discretos |
| Fabricante | Vishay / Siliconix | Descripción | MOSFET N-CH 40V 3A SOT-23 |
| Paquete / caja | Tape & Reel (TR) | cantidad disponible | 51525 |
| Serie | TrenchFET® | Tecnología | MOSFET (Metal Oxide) |
| Temperatura de funcionamiento | -55°C ~ 150°C (TJ) | Tipo de montaje | Surface Mount |
| Paquete / Cubierta | TO-236-3, SC-59, SOT-23-3 | Paquete del dispositivo | SOT-23-3 (TO-236) |
| La disipación de energía (máximo) | 750mW (Ta) | Tipo FET | N-Channel |
| Característica de FET | - | Voltaje drenaje-fuente (VDS) Las | 40V |
| Corriente - Drenaje Continuo (Id) @ 25 ° C | 3A (Ta) | RDS (Max) @Id, Vgs | 45 mOhm @ 3.9A, 10V |
| VGS (th) (Max) @Id | 3V @ 250µA | Carga de puerta (Qg) (máx.) @ Vgs | 15nC @ 10V |
| Capacitancia de Entrada (Ciss) (Max) @ Vds | 540pF @ 20V | Voltaje de la Unidad (Max Rds On, Min Rds On) | 4.5V, 10V |
| Vgs (Max) | ±20V | embalaje | Tape & Reel (TR) |

PC SI2318DS-T1-GE3 51525 Nuevas y originales en stock, Encuentre inventario SI2318DS-T1-GE3, Hoja de datos, PDF, Inventario en Ariat-Tech .com Online, Ordene SI2318DS-T1-GE3 Vishay / Siliconix con garantía y confianza. RFQ SI2318DS-T1-GE3: Info@Ariat-Tech.com

| Partes relacionadas para SI2318DS-T1-GE3 | | | | |
|--|----------------------------------|------------------------------|------------------------------|-----------|
| Imagen | Número de pieza | Descripción | Fabricante | Cantidad |
| | SI2319C95TF | SI2319C95TF Original | Original | 15000 pcs |
| | SI2319DS-T1-E3 | MOSFET P-CH 40V 2.3A SOT23-3 | Vishay / Siliconix | 30000 pcs |
| | SI2318CDS-T1-GE3 | MOSFET N-CH 40V 5.6A SOT-23 | Vishay / Siliconix | 17585 pcs |
| | SI2318DS | SI2318DS 89K | 89K | 30000 pcs |
| | SI2319DDS-T1-GE3 | MOSFET P-CHAN 40V | Electro-Films (EFI) / Vishay | 9000 pcs |
| | SI2318DS-T1-E3 | MOSFET N-CH 40V 3A SOT23-3 | Electro-Films (EFI) / Vishay | 38154 pcs |
| | SI2319DS-T1-E3 | MOSFET P-CH 40V 2.3A SOT23-3 | Electro-Films (EFI) / Vishay | 30000 pcs |
| | SI2318DS-T1-GE3 | MOSFET N-CH 40V 3A SOT-23 | Electro-Films (EFI) / Vishay | 51525 pcs |
| | SI2319CDS-T1-GE3 | MOSFET P-CH 40V 4.4A SOT-23 | Electro-Films (EFI) / Vishay | 36000 pcs |
| | SI2318CDS-T1-E3 | SI2318CDS-T1-E3 VISHAY | Vishay | 23929 pcs |
| | SI2318ADS-T1-GE3 | SI2318ADS-T1-GE3 VB | VB | 10000 pcs |
| | SI2318CDS-T1-GE3 | MOSFET N-CH 40V 5.6A SOT-23 | Electro-Films (EFI) / Vishay | 17585 pcs |
| | SI2318BDS-T1-E3 | SI2318BDS-T1-E3 Original | Original | 30000 pcs |
| | SI2319CDS-T1-E3 | SI2319CDS-T1-E3 VISHAY | Vishay | 9500 pcs |
| | SI2319CDS-T1-GE3 | MOSFET P-CH 40V 4.4A SOT-23 | Vishay / Siliconix | 36000 pcs |
| | SI2318CDS | SI2318CDS VISHAY | Vishay | 430 pcs |
| | SI2319ADS-T1-GE3 | SI2319ADS-T1-GE3 VB | VB | 10000 pcs |
| | SI2318BDS-T1-GE3 | SI2318BDS-T1-GE3 VISHAY | Vishay | 38325 pcs |
| | SI2319DS | SI2319DS 89K | 89K | 30000 pcs |
| | SI2318DS-T1-E3 | MOSFET N-CH 40V 3A SOT23-3 | Vishay / Siliconix | 38154 pcs |

Módulo IC Chips & IGBT - Número de pieza de stock activo

| | | | | |
|----------------------------------|----------------------------------|----------------------------------|----------------------------------|----------------------------------|
| SI2315DS-T1 | SI2315DS-T1-E3 | SI2315DS-T1-GE3 | SI2316-DS | SI2316BDS-T1-E3 |
| SI2316BDS-T1-E3 | SI2316BDS-T1-GE3 | SI2316BDS-T1-GE3 | SI2316DS | SI2316DS-T1-E3 |
| SI2316DS-T1-E3 | SI2316DS-T1-GE3 | SI2316DS-T1-GE3 | SI2317DS | SI2317DS-T1-E3 |
| SI2318ADS-T1-GE3 | SI2318BDS-T1-E3 | SI2318BDS-T1-GE3 | SI2318CDS-T1-E3 | SI2318CDS-T1-GE3 |
| SI2318CDS-T1-GE3 | SI2318DS | SI2318DS-T1-E3 | SI2318DS-T1-E3 | SI2318DS-T1-GE3 |
| SI2319ADS-T1-GE3 | SI2319C95TF | SI2319CDS-T1-E3 | SI2319CDS-T1-GE3 | SI2319CDS-T1-GE3 |
| SI2319DDS-T1-GE3 | SI2319DS | SI2319DS-T1-E3 | SI2319DS-T1-E3 | SI2319DS-T1-GE3 |
| SI2319DS-T1-GE3 | SI2320DS | SI2320DS-T1-E3 | SI2320DS-T1-GE3 | SI2321DS-T1-E3 |
| SI2321DS-T1-E3 | SI2321DS-T1-GE3 | SI2321DS-T1-GE3 | SI2323CDS-T1 | SI2323CDS-T1-E3 |
| SI2323CDS-T1-GE3 | SI2323CDS-T1-GE3 | SI2323DDS-T1-E3 | SI2323DDS-T1-GE3 | SI2323DDS-T1-GE3 |

Distribuidor de componentes electrónicos - Chips de CI y amplificadores; Proveedor de módulos IGBT.

RFQ Email: Info@ariat-tech.com Sitio web: <https://www.ariat-tech.com>

Aviso de derechos de autor © 1996-2019 ARIAT TECHNOLOGY LIMITED. Todos los derechos reservados.