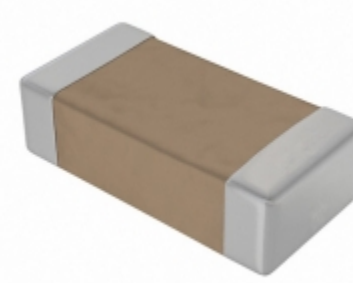


| 1206GA121JAT2A       |   |
|----------------------|---|
| Número de pieza      | 1206GA121JAT2A  |
| Fabricante           | AVX Corporation   |
| Descripción          | CAP CER 120PF 2KV NP0 1206  |
| cantidad disponible  | 500 pcs in stock  |
| Hojas de datos       |   |
| 1206GA121JAT2A Price | Solicitar precio y tiempo de entrega en línea or Email us: <a href="mailto:Info@ariat-tech.com">Info@ariat-tech.com</a> |



CONSIGUE UNA COTIZACIÓN

| Información técnica de 1206GA121JAT2A |                     |                             |                                       |
|---------------------------------------|---------------------|-----------------------------|---------------------------------------|
| Número de pieza del fabricante        | 1206GA121JAT2A      | Categoría                   | Condensadores                         |
| Fabricante                            | AVX Corporation     | Descripción                 | CAP CER 120PF 2KV NP0 1206            |
| Paquete / caja                        | Tape & Reel (TR)    | cantidad disponible         | 500                                   |
| Serie                                 | -                   | Tensión - Calificación      | 2000V (2kV)                           |
| Temperatura de funcionamiento         | -55°C ~ 125°C       | calificaciones              | -                                     |
| Tipo de montaje                       | Surface Mount, MLCC | Tamaño / Medidas            | 0.130" L x 0.063" W (3.30mm x 1.60mm) |
| Altura - Asiento (Máx)                | -                   | Características             | High Voltage                          |
| Capacidad                             | 120pF               | Tolerancia                  | ±5%                                   |
| aplicaciones                          | General Purpose     | Separación de terminales    | -                                     |
| Paquete / Cubierta                    | 1206 (3216 Metric)  | Coefficiente de temperatura | C0G, NP0                              |
| Espesor (máx)                         | 0.071" (1.80mm)     | Estilo plomo                | -                                     |
| embalaje                              | Tape & Reel (TR)    |                             |                                       |

PC 1206GA121JAT2A 500 Nuevas y originales en stock, Encuentre inventario 1206GA121JAT2A, Hoja de datos, PDF, Inventario en Ariat-Tech .com Online, Ordene 1206GA121JAT2A AVX Corporation con garantía y confianza. RFQ 1206GA121JAT2A: [Info@Ariat-Tech.com](mailto:Info@Ariat-Tech.com)

| Partes relacionadas para 1206GA121JAT2A |                                |                                |                   |          |
|---|--------------------------------|--------------------------------|-------------------|----------|
| Imagen                                  | Número de pieza                | Descripción                    | Fabricante        | Cantidad |
|   | <a href="#">1206F225Z500CT</a> | 1206 MLCC Y5V 2.2UF 50V        | Walsin Technology | 500 pcs  |
|   | <a href="#">1206GA181JAT2A</a> | CAP CER 180PF 2KV NP0 1206     | AVX Corporation   | 500 pcs  |
|   | <a href="#">1206F226Z160CT</a> | 1206 MLCC Y5V 522UF 16V        | Walsin Technology | 500 pcs  |
|   | <a href="#">1206F225Z160NT</a> | 1206F225Z160NT MULTIL          | MULTIL            | 3000 pcs |
|   | <a href="#">1206GA220KAJ1A</a> | CAP CER 22PF 2KV NP0 1206      | AVX Corporation   | 500 pcs  |
|   | <a href="#">1206GA121KAT1A</a> | CAP CER 120PF 2KV NP0 1206     | AVX Corporation   | 500 pcs  |
|   | <a href="#">1206GA220KAT1A</a> | CAP CER 22PF 2KV C0G/NP0 1206  | AVX Corporation   | 500 pcs  |
|   | <a href="#">1206GA101JAT2A</a> | CAP CER 100PF 2KV C0G/NP0 1206 | AVX Corporation   | 500 pcs  |
|   | <a href="#">1206F226M160CT</a> | 1206 MLCC Y5V 22 UF 20% 16V    | Walsin Technology | 500 pcs  |
|   | <a href="#">1206GA151JAT2A</a> | CAP CER 150PF 2KV NP0 1206     | AVX Corporation   | 500 pcs  |
|   | <a href="#">1206GA100JAJ1A</a> | CAP CER 10PF 2KV NP0 1206      | AVX Corporation   | 500 pcs  |
|   | <a href="#">1206GA101KAT1A</a> | CAP CER 100PF 2KV NP0 1206     | AVX Corporation   | 500 pcs  |
|   | <a href="#">1206GA100KAT1A</a> | CAP CER 10PF 2KV NP0 1206      | AVX Corporation   | 500 pcs  |
|   | <a href="#">1206GA150JAT1A</a> | CAP CER 15PF 2KV NP0 1206      | AVX Corporation   | 500 pcs  |
|   | <a href="#">1206GA220KAT9A</a> | CAP CER 22PF 2KV C0G/NP0 1206  | AVX Corporation   | 500 pcs  |
|   | <a href="#">1206GA100JAT1A</a> | CAP CER 10PF 2KV NP0 1206      | AVX Corporation   | 500 pcs  |
|   | <a href="#">1206GA100JAT2A</a> | CAP CER 10PF 2KV C0G/NP0 1206  | AVX Corporation   | 500 pcs  |
|   | <a href="#">1206GA220JAT2A</a> | CAP CER 22PF 2KV C0G/NP0 1206  | AVX Corporation   | 500 pcs  |
|   | <a href="#">1206GA220JAT1A</a> | CAP CER 22PF 2KV NP0 1206      | AVX Corporation   | 500 pcs  |
|   | <a href="#">1206GA150KAT1A</a> | CAP CER 15PF 2KV NP0 1206      | AVX Corporation   | 500 pcs  |

**Módulo IC Chips & IGBT - Número de pieza de stock activo**

|                                |                                |                                |                                |                                |
|--------------------------------|--------------------------------|--------------------------------|--------------------------------|--------------------------------|
| <a href="#">1206CC472KAZ9A</a> | <a href="#">1206CC472MAT1A</a> | <a href="#">1206CC472MAT9A</a> | <a href="#">1206CC511KAT2A</a> | <a href="#">1206CC561KATME</a> |
| <a href="#">1206CC562KAJ1A</a> | <a href="#">1206CC562KAT1A</a> | <a href="#">1206CC562MAJ1A</a> | <a href="#">1206CC562MAT1A</a> | <a href="#">1206CC681KAT1A</a> |
| <a href="#">1206CC682KAT1A</a> | <a href="#">1206CC822KAT1A</a> | <a href="#">1206DC104KAT2A</a> | <a href="#">1206DC105MAT2A</a> | <a href="#">1206DD105KAT2A</a> |
| <a href="#">1206DD105KAT2A</a> | <a href="#">1206DD105MAT2A</a> | <a href="#">1206DD105MAT2A</a> | <a href="#">1206DD106KAT2A</a> | <a href="#">1206DD474KAT2A</a> |
| <a href="#">1206GA100JAJ1A</a> | <a href="#">1206GA100JAT1A</a> | <a href="#">1206GA100KAT1A</a> | <a href="#">1206GA101JAT2A</a> | <a href="#">1206GA101KAT1A</a> |
| <a href="#">1206GA121KAT1A</a> | <a href="#">1206GA150JAT1A</a> | <a href="#">1206GA150KAT1A</a> | <a href="#">1206GA151JAT2A</a> | <a href="#">1206GA181JAT2A</a> |
| <a href="#">1206GA220JAT1A</a> | <a href="#">1206GA220KAJ1A</a> | <a href="#">1206GA220KAT1A</a> | <a href="#">1206GA220KAT9A</a> | <a href="#">1206GA220KATME</a> |
| <a href="#">1206GA270JAT1A</a> | <a href="#">1206GA270KATME</a> | <a href="#">1206GA271JAT2A</a> | <a href="#">1206GA300KAT1A</a> | <a href="#">1206GA330JAT1A</a> |
| <a href="#">1206GA330KAT1A</a> | <a href="#">1206GA390JAT1A</a> | <a href="#">1206GA390JAT3A</a> | <a href="#">1206GA390JAT9A</a> | <a href="#">1206GA430JAT1A</a> |
| <a href="#">1206GA470JAT1A</a> | <a href="#">1206GA470KAJ1A</a> | <a href="#">1206GA470KAT1A</a> | <a href="#">1206GA470KAT9A</a> | <a href="#">1206GA470KATBE</a> |

Distribuidor de componentes electrónicos - Chips de CI y amplificadores; Proveedor de módulos IGBT.

RFQ Email: [Info@ariat-tech.com](mailto:Info@ariat-tech.com) Sitio web: <https://www.ariat-tech.com>

Aviso de derechos de autor © 1996-2019 ARIAT TECHNOLOGY LIMITED. Todos los derechos reservados.